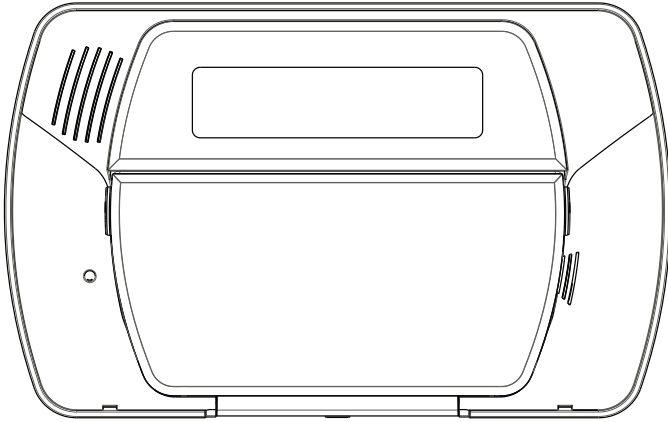


IMPASSA

Self-Contained Wireless Alarm System



v1.1 User Manual

WARNING: This manual contains information on limitations regarding product use and function and information on the limitations as to liability of the manufacturer. The entire manual should be carefully read.

Table of Contents

1. About Your Security System	1
1.1 Fire Detection (must be enabled by Installer)	1
1.2 Carbon Monoxide Detection (must be enabled by Installer)	1
1.3 Testing	1
1.4 Monitoring	1
1.5 Maintenance	1
1.6 General System Operation	1
2. Keypad Controls & Indicators	2
3. Language Selection	2
4. Arming and Disarming the System	2
4.1 Stay Arming	2
4.2 Night Arming	3
4.3 Silent Exit Delay	3
4.4 Away Arming	3
4.5 Quick Exit	3
4.6 Siren Sounds After Away Arming	3
4.7 Disarming	3
4.8 Remote Arming and Disarming	4
5. Emergency Keys	4
6. When Alarm Sounds	4
6.1 Intrusion (Burglary) Alarm Continuous Siren	4
6.2 Fire Alarm Pulsed Siren	4
6.3 Carbon Monoxide (CO) Alarm (must be enabled by your installer)	4
7. 2-Way/1-Way Audio Operation (SCW9057 only)	4
8. Time & Date Programming and Temperature Display	5
9. Bypassing Zones	5
9.1 Bypass Group	5
10. Trouble Conditions	6
11. Alarm Memory	6
12. Door Chime	6
13. Access Code Programming	7
13.1 Access Codes — [*][5][Master Code] (when disarmed)	7
13.2 User Code Attributes	7
13.3 Inherent Attributes (all codes except installer)	7
13.4 Zone Bypassing Attribute	8
13.5 Phone Access Attribute	8
13.6 Bell/Siren Squawk Attribute	8
13.7 Erasing an Access Code	8
14. Proximity Tag Enrollment (PT4/PT8)	8
15. User Function Commands	9
15.1 Changing Brightness/Contrast	9
15.2 Changing the Buzzer Level	10
15.3 Viewing the Event Buffer	10
16. Changing SMS Phone Numbers	10
17. Late to Open	10
18. SMS (Short Message Service) Notification	11
18.1 The SMS Notification Sequence	11
18.2 SMS Remote Access Connection Sequence	11
18.3 On-board LCD Display SMS Messages	12
19. Two-Way Wireless Key (WT4989, WT8989)	12
19.1 Function Keys	12
19.2 WT4989/WT8989 Status Display Icons	12
19.3 Buzzer	13
19.4 Keylock Mode	13
20. Testing Your System	13
20.1 Siren and Keypad Display Test	13
20.2 Walk Test	14
20.3 Allowing Computer Access to your System	14
21. Reference Sheets	14
21.1 Access Codes	15
21.2 Sensor / Zone Information	15
21.3 SMS Telephone Numbers	16
22. Keypad Quick Guide	16
23. Guidelines for Locating Smoke & CO Detectors	18
24. Household Fire Safety Audit	19
25. Fire Escape Planning	19

Always ensure you obtain the latest version of the User Guide. Updated versions of this User Guide are available by contacting your distributor.

IMPORTANT SAFETY INSTRUCTIONS

To reduce the risk of fire, electric shock and/or injury, observe the following:

- Do not spill any type of liquid on the equipment.
- Do not attempt to service this product yourself. Opening or removing the cover may expose you to dangerous voltage or other risk. Refer servicing to qualified service personnel. Never open the device yourself.
- Do not touch the equipment and its connected cables during an electrical storm; there may be a risk of electric shock.
- Do not use the Alarm System to report a gas leak if the system is near a leak.

REGULAR MAINTENANCE AND TROUBLESHOOTING

Keep your Alarm Controller in optimal condition by following all the instructions that are included within this manual and/or marked on the product.

CLEANING

- Clean the units by wiping with a damp cloth only.
- Do not use abrasives, thinners, solvents or aerosol cleaners (spray polish) that may enter through holes in the Alarm Controller and cause damage.
- Do not use any water or any other liquid.
- Do not wipe the front cover with alcohol.

TROUBLESHOOTING

Occasionally, you may have a problem with your Alarm Controller or telephone line. If this happens, your Alarm Controller will identify the problem and display an error message. Refer to “Trouble Conditions” on page 6 when you see an error message on the display. If additional help is required, contact your distributor for service.

WARNING: This equipment, Alarm System SCW9055/SCW9057 shall be installed and used within an environment that provides the pollution degree max 2 and over-voltages category II non-hazardous locations, indoor only. It is designed to be installed, serviced and/or repaired by service persons only [service person is defined as a person having the appropriate technical training and experience necessary to be aware of hazards to which that person may be exposed in performing a task and of measures to minimize the risks to that person or other persons]. For EU and Australian markets, the equipment is permanently connected or direct plug-in connected. For the permanent connection version, an accessible disconnect device shall be incorporated into the building installation wiring. For North America the equipment uses a direct plug-in connection. For the direct plug-in version, the socket outlet shall be installed near the SCW9055/SCW9057 and shall be easily accessible. The plug of the direct plug-in transformer serves as the disconnect device.

NOTE: There are no parts replaceable by the end-user within this equipment, except the batteries for the following: the WT5500 keypad, Indoor Siren (WT4901/WT8901) and the Wireless Key (WT4989/WT8989).

WARNING: Never obstruct the access to the socket-outlet to which this equipment is connected. These safety instructions should not prevent you from contacting the distributor and/or the manufacturer to obtain any further clarification and/or answers to your concerns.

NOTE: For SIA CP-01 installations, wireless key devices (WS4939, WS4938 and WT4989) shall not be used for panic/alarm functionality; only for arming and disarming functions. The product also supports Cross Zoning functionality; two zones shall be activated within the programmed cross zone timer in order for the system to generate an alarm condition. The product also supports the Call Waiting Cancel Dial String, which is enabled by the installer through access of the dialing sequence used to disable call waiting.

1. About Your Security System

Read this manual carefully and have your installer instruct you on your system's operation and on which features have been implemented in your system. All users of this system should be fully instructed in its use. Fill out the "System Information" page with all of your zone information and access codes, and store this manual in a safe place for future reference.

NOTE: Please consult your installer for further information regarding the false alarm reduction features built into your system, as not all are covered in this manual.

1.1 Fire Detection (must be enabled by Installer)

This equipment is capable of monitoring fire detection devices such as smoke detectors and providing a warning if a fire condition is detected. Good fire detection depends on having an adequate number of detectors placed in appropriate locations. This equipment should be installed in accordance with NFPA 72 (N.F.P.A., Batterymarch Park, Quincy MA 02269). Please read the Family Escape Planning guidelines in this manual.

1.2 Carbon Monoxide Detection (must be enabled by Installer)

This equipment is capable of monitoring carbon monoxide detectors and providing a warning if carbon monoxide is detected. Please read the Family Escape Planning guidelines in this manual and instructions that are available with the carbon monoxide detector.

1.3 Testing

To ensure that your system continues to function as intended, you must test your system weekly. Please refer to the "Testing your System" section in this manual. If your system does not function properly, call your installing company for service.

1.4 Monitoring

This system is capable of transmitting alarms, troubles, and emergency information to a central station. If you initiate an alarm by mistake, immediately call the central station to prevent an unnecessary response.

NOTE: The monitoring function must be enabled by the installer before it can become functional.

NOTE: Consult with your installer to determine if your system is configured with a communicator delay. A communicator delay will prevent a report to the central station if the control panel is disarmed within 30-45 seconds after an intrusion alarm is triggered. Note that fire-type alarms are normally reported without a delay.

NOTE: Ensure that your installer verifies that your system is compatible with the Central Station Receiver format at yearly intervals.

1.5 Maintenance

With normal use, the system requires minimum maintenance. Note the following points:

- Do not wash the security equipment with a wet cloth. Light dusting with a slightly moistened cloth should remove normal accumulations of dust.
- Replace the standby battery every 3-5 years.

NOTE: Do not attempt to replace the battery or open the enclosure; there is a risk of electric shock and/or fire.

- For other system devices such as smoke detectors, motion detectors, glassbreak detectors or door/window contacts, consult the manufacturer's literature for testing and maintenance instructions.

1.6 General System Operation

Your security system comprises an integrated alarm control/keypad and various sensors and detectors. The keypad is mounted by the main entry/exit location. The system is self-contained; electronics and standby battery are housed within the keypad unit.

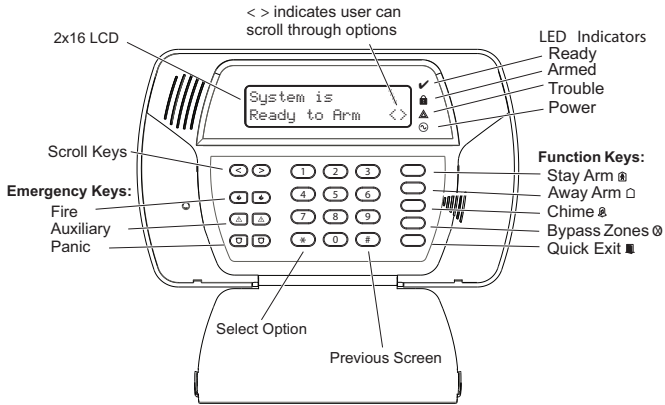
NOTE: Only the installer or service professional should have access to the system.

The security system has several zones of area protection. Each of these zones communicates to a single wireless sensor (motion detectors, glassbreak detectors, door contacts, etc.) or to one or more hard-wired sensors. A sensor in alarm is indicated by messages on the LCD.

Additional features include Automatic Inhibit (Swinger Shutdown) for Alarm; Tamper and Trouble signals after 3 occurrences in a given set period; SMS interactive operation (*SMS features not investigated by UL/ULC*); and a Programmable Keypad Lockout option.

For SIA CP-01 classified installations, the swinger shutdown feature is programmed such that one or two trips will shut down the zone. The zone will be restored after a manual reset (by entering the access code at the time of disarming the alarm system) or it will be reset automatically after 48 hours with no trips on any zones.

2. Keypad Controls & Indicators



IMPORTANT NOTICE

A security system cannot prevent emergencies. It is only intended to alert you and your central station (if applicable) to an emergency situation. Security systems are generally very reliable but they may not work under all conditions and they are not a substitute for prudent security practices or life and property insurance. Your security system must be installed and serviced by qualified security professionals. These professionals can instruct you on the level of protection that has been provided and on system operations.

NOTE: When the keypad is in Sleep Mode it is saving battery life (backlighting). The LCD message display will not be turned on until there is a specific reason: a key is pressed, entry delay is started. In this mode the keypad is still functioning and nothing will be visible; however if desired, your installer can enable the product to show the armed status while in Sleep Mode.

3. Language Selection

To display messages in different languages:

1. Press and hold both [<] [>] buttons simultaneously for 2 seconds.
2. Using the [<] [>] buttons, scroll through the available languages.
3. Press [*] to select your desired language.

4. Arming and Disarming the System

4.1 Stay Arming

Stay arming bypasses the interior (i.e., motion sensors) and arms the perimeter of the system (i.e., doors and windows). Ensure all windows and doors are closed. The Ready (✓) indicator will illuminate.

Press and hold the Stay (Ⓛ) button until it beeps (approx. 2 seconds). Enter your access code, but do not leave the premises. During the setting state (Exit Delay active), the Armed (Ⓛ) and Ready (✓) indicators will illuminate.

When the exit delay has expired, the alarm system is armed/set and this is indicated on the keypad as follows: the Ready (✓) indicator will turn off, the Armed (Ⓛ) indicator will remain on.

The Armed (Ⓛ) indicator and a bypass message will be displayed. The system will automatically ignore bypassed zones (i.e., motion sensors).

NOTE: Your installer can program a function key on the keypad to enable you to arm the system in Stay mode instantly by holding down the function key for 2 seconds. The system arms immediately with no beeps sounding and no exit delay. This feature must not be used in CP-01 installations.

NOTE: For SIA CP-01 listed panels, the Stay Arming Exit Delay will be twice as long as the Away Arming Exit Delay.

NOTE: If your system is installed in accordance with SIA CP-01 Standard for False Alarm Reduction, then the security system will arm in the Stay Armed mode if the exit delay time expires and no exit has been made.

4.2 Night Arming

To night arm the system when it has been armed in Stay mode, press [*][1] at the keypad. All interior zones will now be armed except for devices programmed as Night zones.

NOTE: Your installer can also program a function key on the keypad that enables you to arm the system in Night mode by holding down the function key for 2 seconds.

Night zones are only armed in Away mode; this permits limited movement within the premises when the system is fully armed. Ensure that your installer has provided you with a list identifying zones programmed as night zones. When the interior zones are activated (i.e., [*][1]) you must enter your access code to disarm the system in order to gain access to interior areas that have not been programmed as night zones.

4.3 Silent Exit Delay

If the system is armed using the Stay button or using the “No Entry” Arming method ([*][9] [Access Code]), the keypad buzzer will be silenced and the exit time will be doubled for that exit period only. (CP-01 only).

4.4 Away Arming

Close all sensors (i.e., stop movement around motion detectors, close doors and windows). Ensure the Ready (✓) indicator is on.

To arm, press and hold the Away button for 2 seconds and/or enter your access code or press [*][0] to Quick Arm.

During the setting state (exit delay active) the Armed (🔒) and Ready (✓) indicators will turn on, and the keypad will sound one beep per second. You now have ___ seconds to leave the premises (please check with your installer to have this time programmed). A keypad buzzer, whose pulsating rate is distinct, will sound during the last ten seconds of the exit delay to indicate that the exit delay is running out. To cancel the arming sequence, enter your access code.

When the exit delay has expired, the alarm system is armed and is indicated by the following: the Ready (✓) indicator will turn off, the Armed (🔒) indicator will remain on and the keypad will stop sounding.

NOTE: The system can also be armed/disarmed with a wireless key and with prox tags. Refer to the “Proximity Tags” and “Two-Way Wireless Key” sections for more details.

NOTE: If your system is installed in accordance with SIA CP-01 Standard for False Alarm Reduction, the following holds true: Violation and restoral, followed by a second violation of the entry/exit zone before the end of the exit delay, will restart the exit delay.

4.5 Quick Exit

If the system is armed and you need to exit, use the Quick Exit function to avoid disarming and rearming the system. Press and hold the Quick Exit button (⏏) for 2 seconds or press [*][0]. You now have 2 minutes to leave the premises. When the door is closed again, the remaining exit time is cancelled.

4.6 Siren Sounds After Away Arming

Audible Exit Fault

In order to reduce false alarms, the Audible Exit Fault is designed to notify you of an improper exit when arming the system. If you fail to securely close the entry/exit door during the programmed exit delay period, the system will sound the alarm to indicate an improper exit (your installer will tell you if this feature has been enabled on your system). If this occurs:

1. Re-enter the premises.
2. Enter your access code to disarm the system before the entry delay timer expires.
3. Repeat the Away arming procedure, ensuring that the entry/exit door(s) are secured.

Arming Error

An error tone will sound if the system is unable to arm. This will happen if the system is not ready to arm (i.e., sensors are open), or if an incorrect user code has been entered. If this happens, ensure all sensors are secure, press [#] and try again.

4.7 Disarming

To disarm an armed system (Armed (🔒) indicator is On), enter your access code. If your keypad is in Sleep mode, press any key to wake it up then enter your access code. The keypad will sound a continuous tone after the entry delay has been initiated by opening the entry/exit door. Enter your code within ___ seconds to avoid an alarm condition (check with your installer to program this time).






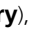
Disarming Error

If your code is invalid, the system will not disarm and a 2-second error tone will sound. If this happens, press [#] and try again.

4.8 Remote Arming and Disarming

The system can be armed and/or disarmed, if programmed by the installer, using a remote control device (wireless key). When arming the system using the Arm button on a wireless key, the system will acknowledge the command by sounding a single bell/siren squawk, if programmed to do so by the installer. When disarming using the Disarm button on a wireless key, the system will acknowledge the command by sounding two bell/siren squawks. Three squawks, when disarming with the Disarm button, indicates that an alarm occurred while the system was armed. If you are unsure of the cause of the alarm, proceed with caution (see section on 2-way Wireless Keys).

5. Emergency Keys

Press BOTH   (Fire),   (Auxiliary), or   (Panic) buttons for 2 seconds to generate a Fire, Auxiliary, or Panic alarm. The keypad buzzer will beep indicating that the alarm input has been accepted and transmission to the central station is underway. The Fire buttons may or may not sound the siren depending on installer setup.

NOTE: The Fire buttons can be disabled by the installer.

NOTE: The Auxiliary Alarm buttons are not intended to be used for medical signals.

6. When Alarm Sounds

The system can generate 3 different alarm sounds:

- Continuous Siren = Intrusion/Burglary Alarm

NOTE: The WT4911 siren will sound a dual frequency sweeping tone for burglary alarms.


- Temporal / Pulsed Siren = Fire Alarm
- 4 beeps, 5-second pause, 4 beeps = Carbon Monoxide alarm

NOTE: The priority of signals is fire alarm, carbon monoxide alarm then burglary alarm.

6.1 Intrusion (Burglary) Alarm Continuous Siren

If you are unsure of the source of the alarm, proceed with caution! If the alarm was accidental, enter your access code to silence the alarm. If the alarm system is disarmed within the programmed Abort Window (check with the installer if this option has been enabled on your system and what is the programmed transmitter delay time is), no alarm transmission to the Central Station will occur. A 5-minute Cancel Window follows the Abort Window, during which a user can cancel an alarm that has been previously transmitted (by entering their access code). A cancel signal will be transmitted to the central station and the alarm system will also announce that the cancel signal was transmitted. Call your central station to avoid a dispatch.

6.2 Fire Alarm Pulsed Siren

 **Follow your emergency evacuation plan immediately!**

If the fire alarm was accidental (burned toast, bathroom steam, etc.), enter your access code to silence the alarm. Call your central station to avoid a dispatch.

6.3 Carbon Monoxide (CO) Alarm (must be enabled by your installer)

Activation of your CO alarm indicates the presence of carbon monoxide (CO), which can be fatal. During an alarm, the red LED on the CO detector flashes rapidly and buzzer sounds with a repeating cadence of: 4 quick beeps, 5-second pause, 4 quick beeps. If an alarm sounds:

1. Press the button on the CO detector to silence the alarm.
2. Call emergency services or your fire department.
3. Immediately move outdoors or to an open door/window.

WARNING: Carefully review your Carbon Monoxide Installation/User Guide to determine the necessary actions required to ensure your safety and ensure that the equipment is operating correctly. Incorporate the steps outlined in the guide into your evacuation plan.

7. 2-Way/1-Way Audio Operation (SCW9057 only)

If programmed by the installer, this feature allows the monitoring station to initiate a 2-way audio (talk/listen) or 1-way audio (listen-in only) session when an alarm has been received. This feature is used to verify the nature of the alarm or determine the type of assistance required by the occupant.

NOTE: This feature can be initiated only by the monitoring station after an alarm has been received. The user can not initiate a 2-way audio session.

8. Time & Date Programming and Temperature Display

HH:MM MM/DD/YY
09:06 01/31/11

Press [*][6] then enter your master access code to enter User Functions. Use the [<][>] buttons to view available menu options, then press [*] to select. Enter the time in 24-hr. format (HH:MM), followed by the date (MM:DD:YY).

Press [#] to exit programming. If you are viewing a "Loss of Clock" trouble from within the trouble menu ([*][2]), press [*] to directly enter Date and Time programming (see Trouble Conditions).

NOTE: Your installer may have programmed your system to display the time and date while the keypad is idle. Press the [#] button to temporarily clear the date and time display if desired.

NOTE: The SCW9055/9057 clock display can be automatically programmed if a 3G Communicator is connected. This feature must be enabled by your installer.

The SCW9055/SCW9057 system and WT5500 keypad can also display the outdoor temperature (Fahrenheit or Celsius) from the 2-way outdoor siren. This feature must be enabled by your installer.

9. Bypassing Zones

Use the zone bypassing feature when you need access to a protected area while the system is armed, or when a zone is temporarily out of service but you need to arm the system. Bypassed zones will not be able to sound an alarm. As a result, bypassing zones reduces the level of security. If you are bypassing a zone because it is not working, call a service technician immediately so that the problem can be resolved and your system returned to proper working order. Ensure that no zones are unintentionally bypassed when arming your system. Zones cannot be bypassed once the system is armed. Bypassed zones (except for 24-hr zones) are automatically cancelled each time the system is disarmed and must be bypassed again, if required, before the next arming.

With the system disarmed:

1. Press [*] to enter the function menu. The keypad will display the screen on the right.
2. Press [1] or [*].
3. If your system is programmed to require access codes the screen on the right will be displayed. Enter your 4-digit access code.
4. Scroll to the desired zone number using the [<][>] keys, then press [*] to select the zone or directly enter the 2-digit number of the zone you wish to bypass (e.g., 0 5 for zone 5).

Press (*) for <>
Zone Bypass

Enter Your
Access Code

Scroll to <>
Bypass Zones

Activating All Bypassed Zones

To remove bypass (all zones):

1. Press [*][1], then your access code.
2. Press [0][0].
3. To exit bypassing mode and return to the Ready state, press [#].

Recalling Bypassed Zones

To recall the last set of bypassed zones:

1. Press [*][1], then your access code.
2. Press [9][9].
3. To exit bypassing mode and return to the Ready state, press [#].

9.1 Bypass Group

A Bypass Group is a selection of zones programmed into the Bypass system. If you bypass a group of zones on a regular basis, you can program them into a Bypass Group, so that you do not have to bypass each zone individually. Note that only one Bypass Group can be programmed at a time.

To program a Bypass Group:

1. Press [*][1], then enter your access code.
2. Enter the 2-digit number (01-64) of the zone to be included in the Bypass Group or use the [<][>] buttons to scroll through the available zones. Press [*] to select the zone.
3. To save the selected zone into the group, press [9][5].
4. To exit bypassing mode and return to the Ready state, press [#].

NOTE: If an access code is required to enter bypassing, only the master code and codes with Supervisory enabled can set the Bypass Group.

To select a Bypass Group when arming the system:

1. Press [*][1], then your access code.
2. Press [9][1]. The next time the system is armed, the zones in this group will be bypassed.
3. To exit bypassing mode and return to the Ready state, press [#].

NOTE: A Bypass Group is only recalled if the system is armed/disarmed after programming the Bypass Group.

NOTE: This feature is not to be used in UL Listed installations.

10. Trouble Conditions

When a trouble condition is detected, the Trouble (▲) indicator will turn on and the keypad will beep every 10 seconds. Press the [#] button to silence the beeps. Press [*][2] to view the trouble condition. The Trouble (▲) indicator will flash. Use the scroll [<][>] keys to view troubles.

Trouble	Comments	Action
Alternate Communicator Trouble	Indicates SIM Card Lock, 3G Network Trouble, Ethernet Trouble, Central Station Receiver Trouble, Supervision Trouble, and SMS Config Trouble. Press [<][>] to scroll through individual troubles.	Call for service. For Ethernet Trouble check LAN connections.
Service Required (Press [1] for more information)	Indicates Low Battery, System Trouble, System Tamper or RF Jam detected.	Call for service.
Loss of AC Power	If the building and/or neighbourhood has lost electrical power, the system will continue to operate on battery power for several hours.	Check AC connection. Call for service.
Telephone Line Fault	The system has detected that the telephone line is disconnected.	Call for service.
Failure to Communicate	The system attempted to communicate with the monitoring station but failed. This may be due to a telephone line Fault.	Call for service.
Module/Sensor Fault	The system is experiencing difficulties with one or more module/sensor on the system. Continue to press [5] to navigate through the zone, keypad, and siren fault menus.	Call for service.
Module/Sensor Tamper	The system has detected a tamper condition with one or more module/sensor on the system. Continue to press [6] to navigate through the zone, keypad, and siren tamper menus.	Call for service.
Module/Sensor Low Battery	The system has detected a low battery condition with one or more module/sensor on the system. Continue to press [7] to display the zone(s), wireless key(s), keypad(s), siren(s) and prox tag(s).	See section on Siren Test. Call for service.
Loss of Time & Date	If complete power was lost (AC and Battery), the time and date will need to be re-programmed. Press [*].	Reprogram Time & Date.
Blank Display/No Response	Keypad battery may have discharged beyond the usable level.	Replace battery (call for service if trouble not cleared).
"Panel Response Not Received" message	The keypad has lost wireless communication with the panel. Occasional display of this message may be caused by local radio frequency interference.	If trouble persists, call for service.

11. Alarm Memory

When an alarm occurs, the Alarm Memory message will be displayed. To view which sensor(s) generated the alarm, press [*][3]. For the system keypad use the scroll [<][>] buttons to view the sensors in alarm memory. Press [#] to exit. To clear the memory, arm and disarm the system.

If an alarm sounded while armed, the system will automatically go to alarm memory when you disarm the system. In this instance, you should proceed with caution, as the intruder may still be within the building/premises.

12. Door Chime

To turn the door chime function on or off, press and hold the Chime (🔔) button for 2 seconds or press [*][4]. The system will sound 3 beeps to indicate the door chime is on, or one long tone to indicate that door chime is off.

13. Access Code Programming

In addition to the master code, you can program up to 16 additional user access codes.

To program User Access Codes:

1. Disarm your system, if it is armed.
2. Press [*][5][Master Access Code (i.e., 4- or 6-digit code)]; the armed (Ⓐ) indicator will turn on.
3. Enter the 2-digit number to be programmed. This number is used to identify the User Access Code being entered (e.g., 06 for User Access Code 6; enter 40 for the master access code), or press the scroll [<][>] buttons to find the specific code and press [*] to select.
4. Enter the new 4-digit or 6-digit access code. When programming is complete, enter another 2-digit code to program or press [#] to exit.

The access codes have programmable attributes which allow zone bypassing, duress, supervisor, remote access, or one-time use activation.

On WT5500P keypads, you will be prompted to swipe a prox tag once the last character of the access code is entered. To delete prox tags, the associated user access code must be deleted as described, then re-programmed if required.

NOTE: If wireless keys have been programmed then wireless key #1 will log as User Access Code #1 (if that access code has been programmed). User Access Codes 1-16 will correspond to wireless keys or prox tags 1-16.

NOTE: When using 6-digit access codes, the minimum number of variations of access codes are 58,823.

13.1 Access Codes — [*][5][Master Code] (when disarmed)

The [*][5] User Programming command is used to program additional access codes (see Access Code Programming).

User Codes - User codes 1-16 are available for the system.

Master Code (Access Code 40) - The master code has all of the attributes listed in the Programmable Attributes list below except for Duress (2) and One-Time Use (8) and is required to program all supervisor code attributes.

Supervisor Codes - These codes are always valid when entering the [*][5] User Code Programming or [*][6] User Function sections. However, these codes can only program additional codes which have equal or lesser attributes. Once programmed, the supervisor codes receive the master code's attributes. These attributes are changeable. Any user code can be made a supervisor code by enabling User Code Attribute 1 (please see below for details).

Duress Codes - Duress codes are standard user codes that will transmit the Duress Alarm Reporting Code whenever the code is entered to perform any function on the system. Any user code can be made a duress code by enabling User Code Attribute 2 (see below for details).

One-Time Use Code - This code permits temporary access to the system for a 24-hour time period. During the 24hr period, the temporary user may disarm the system once. There is no restriction on the number of times the temporary user may arm the system during the time period.

NOTE: Duress codes are not valid when entering [*][5], [*][6] or [*][8] sections.

NOTE: Access codes cannot be programmed as a duplicate or as a Code +/- 1.

13.2 User Code Attributes

1. The default attributes of a new code will be the attributes of the code used to enter [*][5] whether it is a new code or an existing code being programmed.
2. System Master (Code 40) has Attribute 3 on by default.

NOTE: These attributes are not changeable.

13.3 Inherent Attributes (all codes except installer)

Arm / Disarm - Any access code will be valid for arming and disarming the system.

Command Outputs ([*][7][1] and [*][7][2]) - If these outputs require access code entry, any access code is valid for performing the [*][7][1-2][Access Code] functions on the system.

Programmable Attributes ([*][5][Master/Supervisor Code][9][Code])

To program an access code attribute enter [*][5][Master/Supervisor Code][9] then [<][>] scroll to the access code (e.g., 2-digit number 01-16) you want to program. Press [*] to select the access code.

Next, scroll [←][→] to the attribute you want to program and press [★] (or enter the attribute #) to enable/disable the attribute.

#	Attribute	#	Attribute
1	Supervisor Code	5-6	For Future Use
2	Duress Code	7	Bell/Siren Squawk upon Away Arming/Disarming
3	Zone Bypassing Enabled	8	One-Time Use Code
4	Phone Access		

13.4 Zone Bypassing Attribute

This attribute allows the user to manually bypass zones if bypassing requires an access code.

13.5 Phone Access Attribute

This attribute allows the user to specify which user access codes can be used for remote access via SMS.

13.6 Bell/Siren Squawk Attribute

This attribute is used to determine whether an access code should generate an arming/disarming squawk when the away function key is pressed on a wireless key. Contact your installer to have this programmed. The Master code cannot use the Bell/Siren Squawk attribute, but the code is required to enable the Bell/Siren for other codes.

NOTE: This feature cannot prevent the Arm/Disarming squawks from being generated if an access code assigned to a wireless key is manually entered at a keypad.

13.7 Erasing an Access Code

To erase a code, select the code and enter [★] as the first digit. If [★] is entered, the system will delete the code (including the associated prox tag) immediately and the user will be returned to select another code.

14. Proximity Tag Enrollment (PT4/PT8)

Proximity (prox) tag readers are only available on WT5500P keypads. Refer to the label on top of the keypad to confirm which model you have.

Enrolling Proximity Tags

1. Enter [★][5][Master Code] to enter User Code Programming.
2. Scroll to the desired user code (01-16, or 40 for the master code) then press [★].
3. Enter your desired 4 or 6-digit user access code. The following message will be displayed after the user access code is entered:

Present Tag or
Press # to Exit

4. Place the prox tag near the tag reader (Ⓢ) at the left side of the display to assign it to the user code. The following message will be displayed:

Tag Enrolled
Successfully

5. If an attempt is made to assign a prox tag to an existing user code that has an associated prox tag, the following message will be displayed.

Duplicate
Tag/User Code

Select another user code or erase the existing user code and associated prox tag and re-enroll with the new prox tag. Return to Step 2 for instructions on how to enroll a user code.

NOTE: To exit the process at anytime, press [#].

Erasing a User Code/Proximity Tag

Enter [★][5][Master Code], select the desired user code. Enter [★] to erase the code and associated prox tag. The keypad will display the user number (e.g., 01) with a letter "P" if a user code has already been programmed and a letter "T" if a code and prox tag have been programmed.

NOTE: User 40 for the master code cannot be deleted; an attempt to delete this user code will delete the prox tag only. The prox tag must be re-enrolled before it can be used again.

Proximity Tag Operation

6. Place the prox tag near the tag reader (Ⓢ) at the left side of the display to arm/disarm your system. When arming the system, the following message will be displayed:

Exit Delay in
Progress

7. When disarming the system, the following message will be displayed:

System Disarmed

8. If there is an attempt to swipe a prox tag that has not been enrolled, an error tone will sound and the following message will be displayed:

Invalid Tag

Return to Step1 for instructions on how to enroll the prox tag.

WARNING: KEEP THE PROXIMITY TAG OUT OF REACH OF SMALL CHILDREN.

THE MATERIALS ASSOCIATED WITH THIS PRODUCT (LITHIUM BATTERIES, ETC.) MUST BE RECYCLED ACCORDING TO LOCAL RULES AND REGULATIONS.

15. User Function Commands

Disarm the system then enter [*][6][Master Code]. The [*][6] command is used to gain access to the following list of Master functions of the system:

[1] Time and Date - Enter 4 digits for 24hr System Time (HH-MM). Valid entries are 00-23 for the hour and 00-59 for minutes. Enter 6 digits for the Month, Day and Year (MM-DD-YY).

[2]-[3] For Future Use.

[4] System Test - The system tests siren output: on-board siren – 4 seconds (2 seconds medium volume, 2 seconds high volume), indoor/outdoor siren – 2 seconds. Keypad lights, back-up battery pack and communicator are tested.

[5] Enable DLS / Allow Remote System Service - If enabled, the installer can to access Installer Programming remotely using DLS (Downloading Software). This function provides a window for telephone ring detection by the alarm system. The DLS window will remain open for 6 hours, during which time the installer will be able to enter DLS an unlimited number of times. After the 6-hr window has expired, access to programming via DLS will be unavailable until the window is re-opened.

[6] User Call-up - If enabled by the installer, the panel will make 1 attempt to call the downloading computer. The downloading computer must be waiting for the panel to call before downloading can be performed.

[7] For Future Use.

[8] User Walk Test - Allows the user to enter the Walk Test mode. See Walk Test on page 14.

[9] Late to Open Enable/Disable - This function enables or disables the Late to Open time programmed in [0].

[0] Late to Open Time of Day - This function is used to program the time setting enabled in [9].

NOTE: Refer to “Late to Open” section for details.

15.1 Changing Brightness/Contrast

When this option is selected, the keypad will allow you to scroll through 4 brightness levels and 10 contrast levels.

1. Press [*][6] [Master Code].
2. Use the [<|>] buttons to scroll to either Brightness Control or Contrast Control.
3. Press [*] to select the setting you want to adjust.
4. a) **Brightness Control:** There are 4 backlighting levels. Use the [<|>] buttons to scroll to the desired level.
b) **Contrast Control:** There are 10 different display contrast levels. Use the [<|>] buttons to scroll to the desired contrast level.
5. To exit, press [#].

15.2 Changing the Buzzer Level

When this option is selected, the keypad will allow you to scroll through 21 different buzzer levels. A level of 00 disables the buzzer.

1. Press [*][6] [Master Code].
2. Use the [<][>] buttons to scroll to Buzzer Control, then press [*] to select.
3. There are 21 levels; use the [<][>] buttons to scroll to the desired level. Press [#] to exit.

15.3 Viewing the Event Buffer

The event buffer will show you a list of the last 500 events that have occurred on your system.

1. Press [*][6][Master Code].
2. To select Event Buffer viewing, press [*].
3. The keypad will display the event number and the time and date. Press [*] to switch between this information and the event details.
4. Use the [<][>] buttons to scroll through the events in the buffer.
5. To exit event buffer viewing, press [#].

16. Changing SMS Phone Numbers

This section tells you how to program your SMS phone numbers:

1. Enter [*][6][Master Code] to enter the Master User Functions of the system.
2. Use the [<][>] buttons to scroll to the SMS programming prompt.

```
Select Option <>
SMS Programming
```

3. Press [*] to select the SMS phone numbers or to see your panel's cellular phone number. The following message is displayed:

```
Press [*] for <>
Phone No.1 P
```

"P" denotes whether the phone number has been programmed.

- To see your panel's cellular phone number use the [<][>] buttons to scroll to the following message. Then press [*] to view the number.

```
Press [*] for <>
Cell Phone No.
```

Pressing [*] here shows your panel's cellular telephone number.

4. Press [*] to select Phone No. 1. The following 26-digit phone number screen is shown.

```
DFFFFFFFFFFFFFFF
FFFFFFFFFFFFFFPH#X
```

X=1 to 8 to indicate the phone number screen being programmed. (e.g., X=1 for Phone No. 1)

5. Program a new phone number or delete an existing phone number as follows:

- **To Enter a new telephone number** (e.g., 4168889999), enter your numbers starting at the first F (after the D), see below.

```
D4168889999FFFF
FFFFFFFFFFFFFFPH#1
```

Do not delete the remaining F's.

- **To Delete an existing phone number**, replace the letter D with an F by pressing [*][6][*] and then press [#] to exit. This will delete the phone number.

```
F4168889999FFFF
FFFFFFFFFFFFFFPH#1
```

6. Use the [<][>] buttons to scroll to another telephone number to be programmed.
7. Repeat from Step 4 to enter more phone numbers. To exit the process at anytime, press [#].

17. Late to Open

This feature allows a user to be notified if their alarm system is not disarmed by a programmed time of day.

NOTE: The Late-to-Open feature requires the monitoring station to forward calls to the user. Verify with the installer whether this function is active.

[9] Late-to-Open Enable/Disable

The Late to Open feature enables or disables the Late to Open time programmed in [0].

It is typically used to track children after school. For example, if the parents get home from work at 5pm, and a child gets home at 4 p.m. The programmable timer could be set for 4:15 p.m. If the system is not disarmed at this time an alert would be sent to the monitoring station.

The keypad will display "Late to Open is Enabled" and sound 3 beeps if [9] is pressed within the User Functions menu when this feature is off. The LCD keypad will display "Late to Open is Disabled" and sound an error tone if [9] is pressed within the User Functions menu when this feature is on.

[0] Late-to-Open Time of Day

This function is used to program the time setting enabled in [9]. This function programs the "Late to Open" time of day for all 7 days of the week.

- Valid entries for these sections are 00:00 – 23:59.
- Entering 99:99 will disable the "Late to Open" feature for the current day.
- After entering [*][6][Master Code][0], beeps will be sounded and "Press (*) for < > Sunday" will be displayed on the keypad.
- Pressing the right scroll [>] button displays the days of the week, from Sunday to Saturday. While in the Late to Open menu, entering keys 1-7 will also select each day from Sunday to Saturday, respectively.
- If [*] is pressed to select a day of the week, no beeps will be sounded and "Set 24hr Time", "Enter HH:MM 9999" will be displayed. If [#] is pressed from this menu, the user will be returned to the previous Late to Open menu.
- If the Alarm System is armed in any mode when the late to open time matches the time of day, Late to Open will be logged to the event buffer and communicated to the monitoring station.

18. SMS (Short Message Service) Notification

SMS Notification occurs when the control panel sends a text message to the user for each system event that occurs. These text messages are limited to 32 characters.

NOTE: SMS Notification is not available in North America.

Interactive SMS allows the user to send a text message (in one of 28 languages, depending on SMS Interactive language selection) to the control panel and perform a set of functions on the panel. There are 12 pre-defined text message commands available that the user can send to the control panel. Please refer to the SMS Reference Card to find the text used for other languages.

NOTE: Interactive SMS is available in North America.

18.1 The SMS Notification Sequence

The panel will send an SMS notification for every event that the panel can communicate. SMS notification messages are programmed by your installer from the keypad or by using DLS IV. Text messages can be programmed in the language of your choice.

There are 8 SMS phone numbers available to support SMS messages. An SMS phone number can be changed using [*][6][Master Code]. Refer to the *Changing SMS Phone Numbers* section for detailed instructions.

18.2 SMS Remote Access Connection Sequence

This feature allows you to control your security system remotely via SMS.

1. Determine which action to perform remotely on the panel. Please refer to the SMS Reference card for details on how to enter the text required.
All SMS remote access functions require an access code, with the exception of the help function. The following list is an example of the functions available.

Functions

- stay arm
- activate command output 1
- alarm memory request
- away arm
- activate command output 2
- keypad message
- disarm
- deactivate command output 1
- help list of available commands
- bypass
- deactivate command output 2
- unbypass
- status request

NOTE: The default text (see SMS Reference card) used to perform each action can be changed for you by your installer.

2. Compose an SMS message that consists of the function text, a space, and your 4-digit or 6-digit access code (e.g., *Stay Arm 2234*) then send it to your *panel's cellular phone number*.
3. The panel matches the incoming phone number to one of the phone numbers in its SMS Phone number list.
4. The panel verifies the contents of the SMS message and performs the action.
5. When the action is completed, the panel sends an SMS message containing "function successful" back to the user. If the function or access code is invalid, the response will include function unsuccessful" in the SMS message.
6. A one hour System Lockout is caused by entering 5 invalid access codes. If you receive the message "function failed", the system has locked you out and you must wait one hour before using SMS remote access, again.

18.3 On-board LCD Display SMS Messages

In addition to function commands, you can also send general SMS messages to your keypad display from your mobile phone using the "*Keypad Message*" function command. A 10-second steady tone will sound when your message appears on the keypad display. This message is displayed until you press any button to clear. The number of key presses required to remove the message is programmed by your installer. To send a message to your keypad display:

1. Enter *Keypad Message<space>1<space><access code><space><your message>*.
2. Send to your panel's cellular telephone number.

NOTE: The keypad can display a maximum of 32 characters.

19. Two-Way Wireless Key (WT4989, WT8989)

The two-way wireless key communicates directly with the control panel, performing many of the functions that a wireless keypad performs. Please refer to the WT4989/8989 operating instructions for more information.

The WT4989 and WT8989 have 4 function keys programmable for 6 functions each, an LCD icon display that can display system status using a combination of 7 icons and an internal buzzer. Unless custom programmed by your installer, the functions are as follows:

19.1 Function Keys



Status Request - Press this button for 1 second to view the control panel system status via the LCD display icons.



Stay Arming - Press to arm your system in Stay mode. All perimeter zones are active but interior zones remain inactive.



Away Arming - Press to arm your system. Interior and exterior zones will be armed.



Disarm - Press to disarm your system.



Panic Alarm - Press & hold for 3 seconds to create a panic alarm on the security system.



***Command Output 1** - Press & hold both buttons at the same time for 3 seconds to activate the assigned output.



***Command Output 2** - Press & hold both buttons at the same time for 3 seconds to activate the assigned output.

19.2 WT4989/WT8989 Status Display Icons

The table below summarizes the status that can be shown by the WT4989/WT8989 LCD:

ICON (S=Steady, F=Flashing)

(S) System Trouble

(F) Keylock Enable

(S) Disarmed

(S) Away - Armed

(S) Stay - Armed

(S) Night - Armed

(S) Alarm in Memory

(F) Active Alarm

(F) [*][9] Armed - Away

(F) [*][9] Armed - Stay

(F) [*][9] Armed - Night

(S) Low Battery

(F) Critical Low Battery

19.3 Buzzer

Provides an audible confirmation of a pressed button or that a command to the panel has been executed.

19.4 Keylock Mode

Ensures that the system is not accidentally armed or disarmed by the wireless key.

To lock the keys:

1. Press and hold the Status **i** and Away **🏠** keys simultaneously for 3 seconds.
2. After 3 seconds, the wireless key will beep and flash the keylock icon (**🔒**) to indicate that the keys are locked.

To unlock the keys:

1. Press and hold the Status **i** and Away **🏠** keys simultaneously for 3 seconds.

NOTE: Pressing the Panic **🚨** key for 3 seconds will also exit Keylock mode.

2. Upon exiting Keylock mode, the status will be automatically displayed.

20. Testing Your System

NOTE: Inform your Monitoring Station when you begin and end system testing.

Household fire alarm systems shall be tested by a qualified service technician at least every 3 years in accordance with NFPA72. It is the user's responsibility to test the system weekly (excluding smoke detectors). Ensure you follow all the steps in the two tests below.

NOTE: Should the system fail to function properly, call your installer immediately for service.

20.1 Siren and Keypad Display Test

The test activates all display pixels and indicator lights on the keypad and does a 4-second check of the siren.

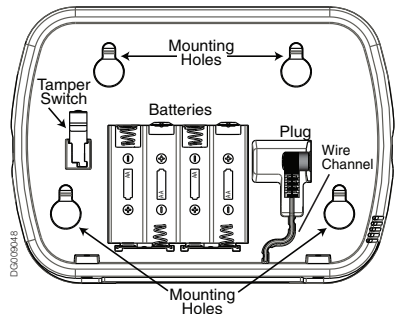
1. Press **[*][6][Master Code][4]**. The following will occur:
 - The system activates the siren output for 2 seconds followed by full volume alarm for 2 seconds. All display lights and LCD pixels will turn on.
 - The Ready, Armed, Trouble and Power LED's will flash for the duration of the test.
2. To exit the function menu, press **[#]**.

Keypad Low Battery

The flashing trouble icon **🔒** on a keypad will indicate that keypad has a low battery.

WT5500 Keypad Battery Replacement

1. Slide the keypad up and out from the mounting plate/desk stand (removing the screws first if required). The bay for the four AA batteries is open and visible at the back of the keypad.
2. Insert the batteries as directed on the back of the keypad. Ensure the correct polarity is observed.
3. Slide the keypad back onto the mounting plate / desk stand.



WT4901/WT8901 Siren Battery Test

To determine which siren has a low battery press and hold the test button, located at the front of the siren, for 5 seconds.

- If the siren sounds for 4 seconds, the batteries are good.
- If the siren doesn't sound, the batteries are low.

WT4901/WT8901 Siren Battery Replacement

- Open the front cover and remove old batteries. Once the old batteries are removed, wait 30 seconds before inserting the replacement batteries.
- Install new batteries as shown in the polarity indicated by the engraving. If the batteries are installed incorrectly, in the reverse polarity, the indoor siren will not work. With typical use, the WT4901/WT8901 batteries should be replaced every 2 years.

NOTE: Only use Energizer (4) 1.5V AA alkaline batteries (WT5500, WT4901/WT8901).

DO NOT RECHARGE THESE BATTERIES. DISPOSAL OF USED BATTERIES MUST BE MADE IN ACCORDANCE WITH THE WASTE RECOVERY AND RECYCLING REGULATIONS IN YOUR AREA.

20.2 Walk Test

Walk Test mode allows you to test the operation of each detector in the system. While in Walk Test mode, the Ready, Armed, and Trouble LED's will flash to indicate that the Walk Test is active. The Walk Test can be terminated at anytime by re-entering [*][6] [Master Code][8] on the keypad. The system will also automatically terminate the Walk Test on completion; it will sound an audible warning (5 beeps every 10 seconds), beginning 5 minutes before the termination of the test.

1. Before testing, ensure that the system is disarmed and the Ready light is on.
2. Press [#] and close all zones to return the system to the Ready state.
3. Perform a System Test by following the steps in the previous section.
4. Press [*][6][Master Code][8] to initiate the Walk Test.
5. To test the zones, activate each detector in turn (e.g., open each door/window or walk in motion detector areas). The System will display the following message "Secure System Before Arming <>", or "Secure or Arm System" when each zone (detector) is activated. Use the [<][>] buttons to view which zones are open. The message will disappear when the zones are closed.

20.3 Allowing Computer Access to your System

Occasionally, your installer may need to send information to or retrieve information from your security system. Your installer will do this by having a computer call your system. You may need to prepare your system to receive this downloading call.

To do this: Press [*][6][Master Code][5] at the keypad. This allows downloading for a limited period of time. During this time, the system will answer incoming downloading calls. For more information on this feature, please ask your installer.

21. Reference Sheets

Fill out the following information for future reference and store this guide in a safe place.

System Information

Enabled?



FIRE



AUXILIARY



PANIC



The Exit Delay Time is _____ seconds.



The Entry Delay Time is _____ seconds.

For Service

Central Station Information:

Account#: _____ Telephone#: _____

Installer Information:

Company: _____ Telephone#: _____



If you suspect a false alarm signal has been sent to the central monitoring station, call the station to avoid an unnecessary response.

Battery Installation / Service Dates:

21.1 Access Codes

Master Code [40]: _____ Proximity Tag:

Code	Wireless Key	Prox Tag	Access Code	Code	Wireless Key	Prox Tag	Access Code
01	<input type="checkbox"/>	<input type="checkbox"/>		09	<input type="checkbox"/>	<input type="checkbox"/>	
02	<input type="checkbox"/>	<input type="checkbox"/>		10	<input type="checkbox"/>	<input type="checkbox"/>	
03	<input type="checkbox"/>	<input type="checkbox"/>		11	<input type="checkbox"/>	<input type="checkbox"/>	
04	<input type="checkbox"/>	<input type="checkbox"/>		12	<input type="checkbox"/>	<input type="checkbox"/>	
05	<input type="checkbox"/>	<input type="checkbox"/>		13	<input type="checkbox"/>	<input type="checkbox"/>	
06	<input type="checkbox"/>	<input type="checkbox"/>		14	<input type="checkbox"/>	<input type="checkbox"/>	
07	<input type="checkbox"/>	<input type="checkbox"/>		15	<input type="checkbox"/>	<input type="checkbox"/>	
08	<input type="checkbox"/>	<input type="checkbox"/>		16	<input type="checkbox"/>	<input type="checkbox"/>	

21.2 Sensor / Zone Information

Sensor	Protected Area	Sensor Type	Sensor	Protected Area	Sensor Type
01			33		
02			34		
03			35		
04			36		
05			37		
06			38		
07			39		
08			40		
09			41		
10			42		
11			43		
12			44		
13			45		
14			46		
15			47		
16			48		
17			49		
18			50		
19			51		
20			52		
21			53		
22			54		
23			55		
24			56		
25			57		
26			58		
27			59		
28			60		
29			61		
30			62		
31			63		
32			64		

21.3 SMS Telephone Numbers

#	SMS	Phone Number	#	SMS	Phone Number
01	<input type="checkbox"/>		05	<input type="checkbox"/>	
02	<input type="checkbox"/>		06	<input type="checkbox"/>	
03	<input type="checkbox"/>		07	<input type="checkbox"/>	
04	<input type="checkbox"/>		08	<input type="checkbox"/>	








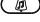


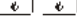
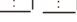
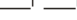
Site Identification Message: _____

Panel's Cellular Phone Number: _____

22. Keypad Quick Guide

The following table summarizes the keys, indicators, and most often used commands of the keypad.

Keypad Keys, Indicators, and Commands

Status Lights		
	Ready	Must be on to arm system. All zones must be secured or bypassed and the system disarmed for this light to activate.
	Armed	Indicates system is armed. If the Ready light and the Armed light are both on it indicates an Exit Delay is in progress.
	Trouble	On indicates a system malfunction or tamper. Flashing indicates that the keypad has a low battery condition. Follow the instructions displayed or enter [*][2] to view trouble. The Trouble light will turn off when the trouble is corrected.
	AC Power	Indicates AC Power is present. The AC Power light will turn off when AC is absent.
Function Keys		
	Stay	Arms the system in Stay Mode.
	Away	Arms the system in Away Mode (default).
	Bypass	Same as pressing [*][1] on the keypad.
	Chime	Same as pressing [*][4] on the keypad.
	Exit	Same as pressing [*][0] on the keypad.
Special Keys		
	Language Selection - Press and hold both buttons simultaneously for 2 seconds to activate. Scroll to the desired language. Press [*] to select choice.	
	Fire - Press and hold both buttons for 2 seconds to activate.	These keys must be programmed by the installer to function.
	Auxiliary - Press and hold both buttons for 2 seconds to activate.	
	Panic - Press and hold both buttons for 2 seconds to activate.	

Keypad Keys, Indicators, and Commands (Continued)

User Commands

Press **[*]** to select. Press **[<|>]** to scroll. Press **[#]** to exit.

PRESS...	To ...	
	Bypass Zones	
	Press [0][0]	Clear Bypass
	Press [9][9]	Bypass Recall
	Press [9][5]	Save Bypass
	Press [9][1]	Recall Save
	View System Troubles	Scroll to view all troubles
	View Alarms in Memory	Scroll to view alarms
	Chime ON/OFF	Turn chime on and off
	Program User Codes Change Attributes	Press [< >] buttons to scroll to user code. Enter [Master Code][9][xx] to enter the user code (xx = 1-16). [1] Supervisor's Code [2] Duress Code [3] Zone Bypassing [4] Remote Access [5]-[6] Future Use [7] Bell/Siren Squawk Output [8] One Time Use Code

User Commands

	User Options	Event Buffer System Test Time and Date System Service/DLS User Call-up Walk Test Brightness Control Buzzer Level Control SMS Phone Numbers Contrast Control Late to Open
	PGM Commands	If programmed by the installer, can be used to activate events such as opening/closing garage doors.
	Installer Programming	Requires a special code.
	No-Entry Arming	The system will arm in Stay mode after the exit delay expires, the entry delay is disabled.
	Quick Arm/Quick Exit	Quick Arm is equivalent to entering your user code. Quick Exit allows you to exit the premises without disarming the system.

23. Guidelines for Locating Smoke & CO Detectors

The following information is for general guidance only and it is recommended that local fire codes and regulations be consulted when locating and installing smoke alarms and CO Alarms:

Smoke Detectors

Research has shown that all hostile fires in homes generate smoke to a greater or lesser extent. Experiments with typical fires in homes indicate that detectable quantities of smoke precede detectable levels of heat in most cases. For these reasons, smoke alarms should be installed outside of each sleeping area and on each storey of the home.

The following information is for general guidance only and it is recommended that local fire codes and regulations be consulted when locating and installing smoke alarms.

It is recommended that additional smoke alarms beyond those required for minimum protection be installed. Additional areas that should be protected include: the basement; bedrooms, especially where smokers sleep; dining rooms; furnace and utility rooms; and any hallways not protected by the required units.

On smooth ceilings, detectors may be spaced 9.1 m (30 feet) apart as a guide. Other spacing may be required depending on ceiling height, air movement, the presence of joists, uninsulated ceilings, etc. Consult National Fire Alarm Code NFPA 72, CAN/ULC-S553-02 or other appropriate national standards for installation recommendations.

- Do not locate smoke detectors at the top of peaked or gabled ceilings; the dead air space in these locations may prevent the unit from detecting smoke.
- Avoid areas with turbulent air flow, such as near doors, fans or windows. Rapid air movement around the detector may prevent smoke from entering the unit.
- Do not locate detectors in areas of high humidity.
- Do not locate detectors in areas where the temperature rises above 38°C (100°F) or falls below 5°C (41°F).

Smoke detectors should always be installed in USA in accordance with Chapter 11 of NFPA 72, the National Fire Alarm Code: 11.5.1.1 Where required by applicable laws, codes, or standards for a specific type of occupancy, approved single- and multiple-station smoke alarms shall be installed as follows:

- (1) In all sleeping rooms and guest rooms.
- (2) Outside of each separate dwelling unit sleeping area, within 6.4 m (21 ft) of any door to a sleeping room, the distance measured along a path of travel.
- (3) On every level of a dwelling unit, including basements.
- (4) On every level of a residential board and care occupancy (small facility), including basements and excluding crawl spaces and unfinished attics.
- (5) In the living area(s) of a guest suite.
- (6) In the living area(s) of a residential board and care occupancy (small facility).

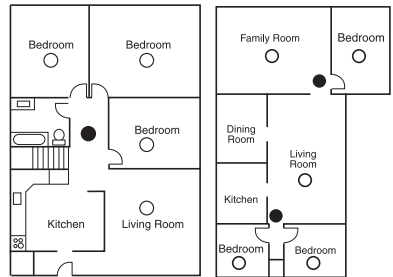


Figure 1

Figure 2

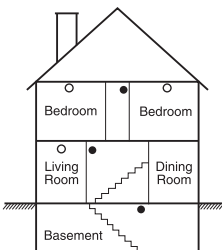


Figure 3

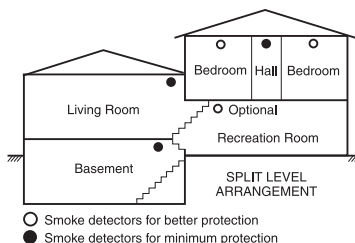


Figure 3a

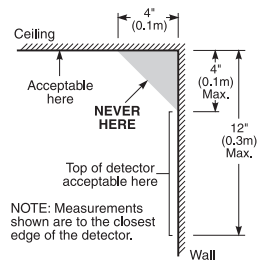


Figure 4

Carbon Monoxide Detectors

Carbon monoxide is colorless, odorless, tasteless, and very toxic. Carbon monoxide gas moves freely in the air. The human body is most vulnerable to the effects of CO gas during sleeping hours. For maximum protection, a CO alarm should be located outside primary sleeping areas or on each level of your home. Figure 5 indicates the suggested locations in the home. The electronic sensor detects carbon monoxide, measures the concentration and sounds a loud alarm before a potentially harmful level is reached.

Do **NOT** place the CO alarm in the following areas:

- Where the temperature may drop below -10°C or exceed 40°C
- Near paint thinner fumes
- Within 5 feet (1.5 meter) of open flame appliances such as furnaces, stoves and fireplaces
- In exhaust streams from gas engines, vents, flues or chimneys
- In close proximity to an automobile exhaust pipe; this will damage the detector

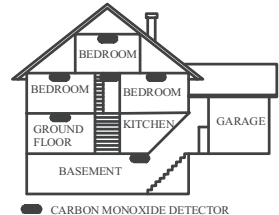


Figure 5

PLEASE REFER TO THE CO DETECTOR INSTALLATION AND OPERATING INSTRUCTION SHEET FOR SAFETY INSTRUCTIONS AND EMERGENCY INFORMATION.

24. Household Fire Safety Audit

Read this section carefully for important information about fire safety.

Most fires occur in the home. To minimize this danger, we recommend that a household fire safety audit be conducted and a fire escape plan be developed.

1. Are all electrical appliances and outlets in a safe condition? Check for frayed cords, overloaded lighting circuits, etc. If you are uncertain about the condition of your electrical appliances or household service, have a professional evaluate these units.
2. Are all flammable liquids stored safely in closed containers in a well-ventilated cool area? Cleaning with flammable liquids should be avoided.
3. Are fire-hazardous materials (e.g., matches) well out of reach of children?
4. Are furnaces and wood-burning appliances properly installed, clean and in good working order? Have a professional evaluate these appliances.

25. Fire Escape Planning

There is often very little time between the detection of a fire and the time it becomes deadly. It is thus very important that a family escape plan be developed and rehearsed.

1. Every family member should participate in developing the escape plan.
2. Study the possible escape routes from each location within the house. Since many fires occur at night, special attention should be given to the escape routes from sleeping quarters.
3. Escape from a bedroom must be possible without opening the interior door.

NOTE: Consider the following when making your escape plans:

- Make sure that all border doors and windows are easily opened. Ensure that they are not painted shut, and that their locking mechanisms operate smoothly.
- If opening or using the exit is too difficult for children, the elderly or handicapped, plans for rescue should be developed. This includes making sure that those who are to perform the rescue can promptly hear the fire warning signal.
- If the exit is above the ground level, an approved fire ladder or rope should be provided as well as training in its use.
- Exits on the ground level should be kept clear. Be sure to remove snow from exterior patio doors in winter; outdoor furniture or equipment should not block exits.
- Each person should know of a predetermined assembly point where everyone can be accounted for (e.g. across the street or at a neighbor's house). Once everyone is out of the building, call the Fire Department.
- A good plan emphasizes quick escape. Do not investigate or attempt to fight the fire, and do not gather belongings as this can waste valuable time. Once outside, do not re-enter the house. Wait for the fire department.
- Write the fire escape plan down and rehearse it frequently so that should an emergency arise, everyone will know what to do. Revise the plan as conditions change, such as the number of people in the home, or if there are changes to the building's construction.
- Make sure your fire warning system is operational by conducting weekly tests. If you are unsure about system operation, contact your installer.
- We recommend that you contact your local fire department and request further information on fire safety and escape planning. If available, have your local fire prevention officer conduct an in-house fire safety inspection.

IMPORTANT - READ CAREFULLY: DSC Software purchased with or without Products and Components is copyrighted and is purchased under the following license terms:

- This End-User License Agreement ("EULA") is a legal agreement between You (the company, individual or entity who acquired the Software and any related Hardware) and Digital Security Controls, a division of Tyco Safety Products Canada Ltd. ("DSC"), the manufacturer of the integrated security systems and the developer of the software and any related products or components ("HARDWARE") which You acquired.
- If the DSC software product ("SOFTWARE PRODUCT" or "SOFTWARE") is intended to be accompanied by HARDWARE, and is NOT accompanied by new HARDWARE, You may not use, copy or install the SOFTWARE PRODUCT. The SOFTWARE PRODUCT includes computer software, and may include associated media, printed materials, and "online" or electronic documentation.
- Any software provided along with the SOFTWARE PRODUCT that is associated with a separate end-user license agreement is licensed to You under the terms of that license agreement.
- By installing, copying, downloading, storing, accessing or otherwise using the SOFTWARE PRODUCT, You agree unconditionally to be bound by the terms of this EULA, even if this EULA is deemed to be a modification of any previous arrangement or contract. If You do not agree to the terms of this EULA, DSC is unwilling to license the SOFTWARE PRODUCT to You, and You have no right to use it.

SOFTWARE PRODUCT LICENSE

The SOFTWARE PRODUCT is protected by copyright laws and international copyright treaties, as well as other intellectual property laws and treaties. The SOFTWARE PRODUCT is licensed, not sold.

1. GRANT OF LICENSE This EULA grants You the following rights:

- (a) Software Installation and Use - For each license You acquire, You may have only one copy of the SOFTWARE PRODUCT installed.
- (b) Storage/Network Use - The SOFTWARE PRODUCT may not be installed, accessed, displayed, run, shared or used concurrently on or from different computers, including a workstation, terminal or other digital electronic device ("Device"). In other words, if You have several workstations, You will have to acquire a license for each workstation where the SOFTWARE will be used.
- (c) Backup Copy - You may make back-up copies of the SOFTWARE PRODUCT, but You may only have one copy per license installed at any given time. You may use the back-up copy solely for archival purposes. Except as expressly provided in this EULA, You may not otherwise make copies of the SOFTWARE PRODUCT, including the printed materials accompanying the SOFTWARE.

2. DESCRIPTION OF OTHER RIGHTS AND LIMITATIONS

- (a) Limitations on Reverse Engineering, Decompilation and Disassembly - You may not reverse engineer, decompile, or disassemble the SOFTWARE PRODUCT, except and only to the extent that such activity is expressly permitted by applicable law notwithstanding this limitation. You may not make any changes or modifications to the Software, without the written permission of an officer of DSC. You may not remove any proprietary notices, marks or labels from the Software Product. You shall institute reasonable measures to ensure compliance with the terms and conditions of this EULA.
- (b) Separation of Components - The SOFTWARE PRODUCT is licensed as a single product. Its component parts may not be separated for use on more than one HARDWARE unit.
- (c) Single INTEGRATED PRODUCT - If You acquired this SOFTWARE with HARDWARE, then the SOFTWARE PRODUCT is licensed with the HARDWARE as a single integrated product. In this case, the SOFTWARE PRODUCT may only be used with the HARDWARE as set forth in this EULA.
- (d) Rental - You may not rent, lease or lend the SOFTWARE PRODUCT. You may not make it available to others or post it on a server or web site.
- (e) Software Product Transfer - You may transfer all of Your rights under this EULA only as part of a permanent sale or transfer of the HARDWARE, provided You retain no copies, You transfer all of the SOFTWARE PRODUCT (including all component parts, the media and printed materials, any upgrades and this EULA), and provided the recipient agrees to the terms of this EULA. If the SOFTWARE PRODUCT is an upgrade, any transfer must also include all prior versions of the SOFTWARE PRODUCT.
- (f) Termination - Without prejudice to any other rights, DSC may terminate this EULA if You fail to comply with the terms and conditions of this EULA. In such event, You must destroy all copies of the SOFTWARE PRODUCT and all of its component parts.

- (g) Trademarks - This EULA does not grant You any rights in connection with any trademarks or service marks of DSC or its suppliers.

3. COPYRIGHT - All title and intellectual property rights in and to the SOFTWARE PRODUCT (including but not limited to any images, photographs, and text incorporated into the SOFTWARE PRODUCT), the accompanying printed materials, and any copies of the SOFTWARE PRODUCT, are owned by DSC or its suppliers. You may not copy the printed materials accompanying the SOFTWARE PRODUCT. All title and intellectual property rights in and to the content which may be accessed through use of the SOFTWARE PRODUCT are the property of the respective content owner and may be protected by applicable copyright or other intellectual property laws and treaties. This EULA grants You no rights to use such content. All rights not expressly granted under this EULA are reserved by DSC and its suppliers.

4. EXPORT RESTRICTIONS - You agree that You will not export or re-export the SOFTWARE PRODUCT to any country, person, or entity subject to Canadian export restrictions.

5. CHOICE OF LAW - This Software License Agreement is governed by the laws of the Province of Ontario, Canada.

6. ARBITRATION - All disputes arising in connection with this Agreement shall be determined by final and binding arbitration in accordance with the Arbitration Act, and the parties agree to be bound by the arbitrator's decision. The place of arbitration shall be Toronto, Canada, and the language of the arbitration shall be English.

7. LIMITED WARRANTY

- (a) NO WARRANTY - DSC PROVIDES THE SOFTWARE "AS IS" WITHOUT WARRANTY. DSC DOES NOT WARRANT THAT THE SOFTWARE WILL MEET YOUR REQUIREMENTS OR THAT OPERATION OF THE SOFTWARE WILL BE UNINTERRUPTED OR ERROR-FREE.
- (b) CHANGES IN OPERATING ENVIRONMENT - DSC shall not be responsible for problems caused by changes in the operating characteristics of the HARDWARE, or for problems in the interaction of the SOFTWARE PRODUCT with non-DSC-SOFTWARE or HARDWARE PRODUCTS.
- (c) LIMITATION OF LIABILITY; WARRANTY REFLECTS ALLOCATION OF RISK - IN ANY EVENT, IF ANY STATUTE IMPLIES WARRANTIES OR CONDITIONS NOT STATED IN THIS LICENSE AGREEMENT, DSC'S ENTIRE LIABILITY UNDER ANY PROVISION OF THIS LICENSE AGREEMENT SHALL BE LIMITED TO THE GREATER OF THE AMOUNT ACTUALLY PAID BY YOU TO LICENSE THE SOFTWARE PRODUCT AND FIVE CANADIAN DOLLARS (CAD\$5.00). BECAUSE SOME JURISDICTIONS DO NOT ALLOW THE EXCLUSION OR LIMITATION OF LIABILITY FOR CONSEQUENTIAL OR INCIDENTAL DAMAGES, THE ABOVE LIMITATION MAY NOT APPLY TO YOU.
- (d) DISCLAIMER OF WARRANTIES - THIS WARRANTY CONTAINS THE ENTIRE WARRANTY AND SHALL BE IN LIEU OF ANY AND ALL OTHER WARRANTIES, WHETHER EXPRESSED OR IMPLIED (INCLUDING ALL IMPLIED WARRANTIES OF MERCHANTABILITY OR FITNESS FOR A PARTICULAR PURPOSE) AND OF ALL OTHER OBLIGATIONS OR LIABILITIES ON THE PART OF DSC. DSC MAKES NO OTHER WARRANTIES. DSC NEITHER ASSUMES NOR AUTHORIZES ANY OTHER PERSON PURPORTING TO ACT ON ITS BEHALF TO MODIFY OR TO CHANGE THIS WARRANTY, NOR TO ASSUME FOR IT ANY OTHER WARRANTY OR LIABILITY CONCERNING THIS SOFTWARE PRODUCT.
- (e) EXCLUSIVE REMEDY AND LIMITATION OF WARRANTY - UNDER NO CIRCUMSTANCES SHALL DSC BE LIABLE FOR ANY SPECIAL, INCIDENTAL, CONSEQUENTIAL OR INDIRECT DAMAGES BASED UPON BREACH OF WARRANTY, BREACH OF CONTRACT, NEGLIGENCE, STRICT LIABILITY, OR ANY OTHER LEGAL THEORY. SUCH DAMAGES INCLUDE, BUT ARE NOT LIMITED TO, LOSS OF PROFITS, LOSS OF THE SOFTWARE PRODUCT OR ANY ASSOCIATED EQUIPMENT, COST OF CAPITAL, COST OF SUBSTITUTE OR REPLACEMENT EQUIPMENT, FACILITIES OR SERVICES, DOWN TIME, PURCHASERS TIME, THE CLAIMS OF THIRD PARTIES, INCLUDING CUSTOMERS, AND INJURY TO PROPERTY.

WARNING: DSC recommends that the entire system be completely tested on a regular basis. However, despite frequent testing, and due to, but not limited to, criminal tampering or electrical disruption, it is possible for this SOFTWARE PRODUCT to fail to perform as expected.

WARNING Please Read Carefully

Note to Installers

This warning contains vital information. As the only individual in contact with system users, it is your responsibility to bring each item in this warning to the attention of the users of this system.

System Failures

This system has been carefully designed to be as effective as possible. There are circumstances, however, involving fire, burglary, or other types of emergencies where it may not provide protection. Any alarm system of any type may be compromised deliberately or may fail to operate as expected for a variety of reasons. Some but not all of these reasons may be:

• Inadequate Installation

A security system must be installed properly in order to provide adequate protection. Every installation should be evaluated by a security professional to ensure that all access points and areas are covered. Locks and latches on windows and doors must be secure and operate as intended. Windows, doors, walls, ceilings and other building materials must be of sufficient strength and construction to provide the level of protection expected. A reevaluation must be done during and after any construction activity. An evaluation by the fire and/or police department is highly recommended if this service is available.

• Criminal Knowledge

This system contains security features which were known to be effective at the time of manufacture. It is possible for persons with criminal intent to develop techniques which reduce the effectiveness of these features. It is important that a security system be reviewed periodically to ensure that its features remain effective and that it be updated or replaced if it is found that it does not provide the protection expected.

• Access by Intruders

Intruders may enter through an unprotected access point, circumvent a sensing device, evade detection by moving through an area of insufficient coverage, disconnect a warning device, or interfere with or prevent the proper operation of the system.

• Power Failure

Control units, intrusion detectors, smoke detectors and many other security devices require an adequate power supply for proper operation. If a device operates from batteries, it is possible for the batteries to fail. Even if the batteries have not failed, they must be charged, in good condition and installed correctly. If a device operates only by AC power, any interruption, however brief, will render that device inoperative while it does not have power. Power interruptions of any length are often accompanied by voltage fluctuations which may damage electronic equipment such as a security system. After a power interruption has occurred, immediately conduct a complete system test to ensure that the system operates as intended.

• Failure of Replaceable Batteries

This system's wireless transmitters have been designed to provide several years of battery life under normal conditions. The expected battery life is a function of the device environment, usage and type. Ambient conditions such as high humidity, high or low temperatures, or large temperature fluctuations may reduce the expected battery life. While each transmitting device has a low battery monitor which identifies when the batteries need to be replaced, this monitor may fail to operate as expected. Regular testing and maintenance will keep the system in good operating condition.

• Compromise of Radio Frequency (Wireless) Devices

Signals may not reach the receiver under all circumstances which could include metal objects placed on or near the radio path or deliberate jamming or other inadvertent radio signal interference.

• System Users

A user may not be able to operate a panic or emergency switch possibly due to permanent or temporary physical disability, inability to reach the device in time, or unfamiliarity with the correct operation. It is important that all system users be trained in the correct operation of the alarm system and that they know how to respond when the system indicates an alarm.

• Smoke Detectors

Smoke detectors that are a part of this system may not properly alert occupants of a fire for a number of reasons, some of which follow. The smoke detectors may have been improperly installed or positioned. Smoke may not be able to reach the smoke detectors, such as when the fire is in a chimney, walls or roofs, or on the other side of closed doors. Smoke detectors may not detect smoke from fires on another level of the residence or building.

Every fire is different in the amount of smoke produced and the rate of burning. Smoke detectors cannot sense all types of fires equally well. Smoke detectors may not provide timely warning of fires caused by carelessness or safety hazards such as smoking in bed, violent explosions, escaping gas, improper storage of flammable materials, overloaded electrical circuits, children playing with matches or arson.

Even if the smoke detector operates as intended, there may be circumstances when there is insufficient warning to allow all occupants to escape in time to avoid injury or death.

• Motion Detectors

Motion detectors can only detect motion within the designated areas as shown in their respective installation instructions. They cannot discriminate between intruders and intended occupants. Motion detectors do not provide volumetric area protection. They have multiple beams of detection and motion can only be detected in unobstructed areas covered by these beams. They cannot detect motion which occurs behind walls, ceilings, floor, closed doors, glass partitions, glass doors or windows. Any type of tampering whether intentional or unintentional such as masking, painting, or spraying of any material on the lenses, mirrors, windows or any other part of the detection system will impair its proper operation.

Passive infrared motion detectors operate by sensing changes in temperature. However their effectiveness can be reduced when the ambient temperature rises near or above body temperature or if there are intentional or unintentional sources of heat in or near the detection area. Some of these heat sources could be heaters, radiators, stoves, barbecues, fireplaces, sunlight, steam vents, lighting and so on.

• Warning Devices

Warning devices such as sirens, bells, horns, or strobes may not warn people or waken someone sleeping if there is an intervening wall or door. If warning devices are located on a different level of the residence or premise, then it is less likely that the occupants will be alerted or awakened. Audible warning devices may be interfered with by other noise sources such as stereos, radios, televisions, air conditioners or other appliances, or passing traffic. Audible warning devices, however loud, may not be heard by a hearing-impaired person.

• Telephone Lines

If telephone lines are used to transmit alarms, they may be out of service or busy for certain periods of time. Also an intruder may cut the telephone line or defeat its operation by more sophisticated means which may be difficult to detect.

• Insufficient Time

There may be circumstances when the system will operate as intended, yet the occupants will not be protected from the emergency due to their inability to respond to the warnings in a timely manner. If the system is monitored, the response may not occur in time to protect the occupants or their belongings.

• Component Failure

Although every effort has been made to make this system as reliable as possible, the system may fail to function as intended due to the failure of a component.

• Inadequate Testing

Most problems that would prevent an alarm system from operating as intended can be found by regular testing and maintenance. The complete system should be tested weekly and immediately after a break-in, an attempted break-in, a fire, a storm, an earthquake, an accident, or any kind of construction activity inside or outside the premises. The testing should include all sensing devices, keypads, consoles, alarm indicating devices and any other operational devices that are part of the system.

• Security and Insurance

Regardless of its capabilities, an alarm system is not a substitute for property or life insurance. An alarm system also is not a substitute for property owners, renters, or other occupants to act prudently to prevent or minimize the harmful effects of an emergency situation.

FCC COMPLIANCE STATEMENT

CAUTION: Changes or modifications not expressly approved by Digital Security Controls could void your authority to use this equipment.

This equipment has been tested and found to comply with the limits for a Class B digital device, pursuant to Part 15 of the FCC Rules. These limits are designed to provide reasonable protection against harmful interference in a residential installation. This equipment generates, uses and can radiate radio frequency energy and, if not installed and used in accordance with the instructions, may cause harmful interference to radio communications. However, there is no guarantee that interference will not occur in a particular installation. If this equipment does cause harmful interference to radio or television reception, which can be determined by turning the equipment off and on, the user is encouraged to try to correct the interference by one or more of the following measures:

- Re-orient the receiving antenna.
- Increase the separation between the equipment and receiver.
- Connect the equipment into an outlet on a circuit different from that to which the receiver is connected.
- Consult a dealer or experienced radio/television technician for help.

The user may find the following booklet prepared by the FCC useful: "How to Identify and Resolve Radio/Television Interference Problems". This booklet is available from the U.S. Government Printing Office, Washington D.C. 20402. Stock # 004-000-00345-4.

IMPORTANT INFORMATION

This equipment complies with Part 68 of the FCC Rules and, if the product was approved July 23, 2001 or later, the requirements adopted by the ACTA. On the top side of this equipment is a label that contains, among other information, a product identifier. If requested, this number must be provided to the Telephone Company.

Product Identifier: US:F53AL01B9057
USOC Jack: RJ-31X

Telephone Connection Requirements

A plug and jack used to connect this equipment to the premises wiring and telephone network must comply with the applicable FCC Part 68 rules and requirements adopted by the ACTA. A compliant telephone cord and modular plug is provided with this product. It is designed to be connected to a compatible modular jack that is also compliant. See installation instructions for details.

Ringer Equivalence Number (REN)

The REN is used to determine the number of devices that may be connected to a telephone line. Excessive RENs on a telephone line may result in the devices not ringing in response to an incoming call. In most but not all areas, the sum of RENs should not exceed five (5.0). To be certain of the number of devices that may be connected to a line, as determined by the total RENs, contact the local Telephone Company. For products approved after July 23, 2001, the REN for this product is part of the product identifier that has the format US:AAEQ##T#XXXX. The digits represented by ## are the REN without a decimal point (e.g., 03 is a REN of 0.3). For earlier products, the REN is separately shown on the label. REN = 0.1B

Incidence of Harm

If this equipment (SCW9055/SCW9057) causes harm to the telephone network, the telephone company will notify you in advance that temporary discontinuance of service may be required. But if advance notice is not practical, the Telephone Company will notify the customer as soon as possible. Also, you will be advised of your right to file a complaint with the FCC if you believe it is necessary.

Changes in Telephone Company Equipment or Facilities

The Telephone Company may make changes in its facilities, equipment, operations or procedures that could affect the operation of the equipment. If this happens the Telephone Company will provide advance notice in order for you to make necessary modifications to maintain uninterrupted service.

Equipment Maintenance Facility

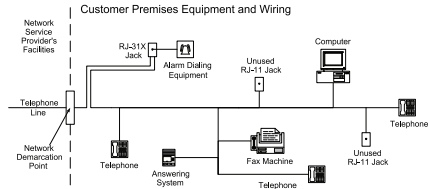
If trouble is experienced with this equipment (SCW9055/SCW9057) for repair or warranty information, contact the facility indicated below. If the equipment is causing harm to the telephone network, the Telephone Company

may request that you disconnect the equipment until the problem is solved. This equipment is of a type that is not intended to be repaired by the end user. DSC c/o APL Logistics 757 Douglas Hill Rd., Lithia Springs, GA 30122

Additional Information

Connection to party line service is subject to state tariffs. Contact the state public utility commission, public service commission or corporation commission for information.

Alarm dialling equipment must be able to seize the telephone line and place a call in an emergency situation. It must be able to do this even if other equipment (telephone, answering system, computer modem, etc.) already has the telephone line in use. To do so, alarm dialling equipment must be connected to a properly installed RJ-31X jack that is electrically in series with and ahead of all other equipment attached to the same telephone line. Proper installation is depicted in the figure below. If you have any questions concerning these instructions, you should consult your telephone company or a qualified installer about installing the RJ-31X jack and alarm dialling equipment for you.



INDUSTRY CANADA STATEMENT

NOTICE: This product meets the applicable Industry Canada technical specifications.

Le présent matériel est conforme aux spécifications techniques applicables d'Industrie Canada.

The Ringer Equivalence Number (REN) for this terminal equipment is 0.1. L'indice d'équivalence de la sonnerie (IES) du présent matériel est de 0.1.

The Ringer Equivalence Number is an indication of the maximum number of devices allowed to be connected to a telephone interface. The termination on an interface may consist of any combination of devices subject only to the requirement that the sum of the RENs of all the devices does not exceed five. L'indice d'équivalence de la sonnerie (IES) sert à indiquer le nombre maximal de terminaux qui peuvent être raccordés à une interface téléphonique. La terminaison d'une interface peut consister en une combinaison quelconque de dispositifs, à la seule condition que la somme d'indices d'équivalence de la sonnerie de tous les dispositifs n'excède pas 5.

The term "IC:" before the radio certification number only signifies that Industry Canada technical specifications were met.

Certification Number IC: 160A-9057 (models SCW9055-433/SCW9057-433)
Certification Number IC: 160A-9057G (models SCW9055(D)(G)(SM)-433/SCW9057(D)(G)(SM)-433)

This Class B digital apparatus complies with Canadian ICES-003. Cet appareil numérique de la classe B est conforme à la norme NMB-003 du Canada.

The SCW9055(X)-433 and SCW9057(X)-433 have been investigated by UL and ULC and found in compliance with the listing requirements for Residential Fire and Burglary applications in accordance with the following standards: UL985, UL1023, UL1635, ULC-S545 and ORD-C1023.

This device complies with Industry Canada licence-exempt RSS standard(s). Operation is subject to the following two conditions: (1) this device may not cause interference, and (2) this device must accept any interference, including interference that may cause undesired operation of the device.

Cet appareil est conforme avec Industrie Canada exempts de licence standard RSS (s). Le fonctionnement est soumis aux deux conditions suivantes: (1) cet appareil ne peut pas provoquer d'interférences et (2) cet appareil doit accepter toute interférence, y compris les interférences qui peuvent causer un mauvais fonctionnement de l'appareil.

This publication covers the following models:

- SCW9055-433/868
- SCW9057-433/868
- SCW9055D-433/868
- SCW9057D-433/868
- SCW9055I-433/868
- SCW9057I-433/868
- SCW9055G-433/868
- SCW9057G-433/868
- WT5500-433/868
- WT5500P-433/868
- WT4989
- WT8989
- WT4901
- WT8901
- WT4911
- WT8911
- PT4
- PT8

The 868 MHz models are not UL/ULC listed.

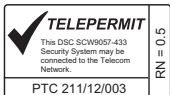
Only these models shall be used with UL/ULC listed systems: SCW9055-433, SCW9057-433, SCW9055G-433, SCW9057G-433, WT5500-433, WT5500P-433, WT4901, WT4911, WT4989 and PT4. Only certain models of SCW9055/57 include the SMS features, check with your installer.



The following is a list of warnings applicable when this equipment is connected to the New Zealand Telecom Network.

General Warning

The grant of a Telepermit for any item of terminal equipment indicates only that Telecom has accepted that the item complies with minimum conditions for connection to its network. It indicates no endorsement of the product by Telecom, nor does it provide any sort of warranty. Above all, it provides no assurance that any item will work correctly in all respects with another item of Telepermitted equipment of a different make or model, nor does it imply that any product is compatible with all of Telecom's network services.



Reverse Numbering (decadic signalling)

Decadic signalling should not be used as it is being progressively phased out of the network. DTMF dialling is 100% available and it should always be used.



Line Grabbing Equipment

This equipment is set up to carry out test calls at pre-determined times. Such test calls will interrupt any other calls that may be set up on the line at the same time. The timing set for such test calls should be discussed with the installer. The timing set for test calls from this equipment may be subject to 'drift'. If this proves to be inconvenient and your calls are interrupted, then the problem of timing should be discussed with the equipment installer. The matter should NOT be reported as a fault to Telecom Faults Service.

D.C. Line Feed to Other Devices

During dialling, this device unit does not provide DC voltage to the series port connection and this may cause loss of memory functions for the terminal devices (local telephone) connected to T-1, R-1.

General Operation (ringer sensitivity and loading)

This device only responds to Distinctive Alert cadences DA1 and DA2.

In the event of any problem with this device, it is to be disconnected. A CPE item connected to one of the device's terminal ports may be connected directly in its place. The user should then arrange for the product to be repaired. Should the matter be reported to Telecom as a wiring fault, and the fault is proven to be due to this product, a call-out charge will be incurred.

© 2012 Tyco International Ltd. and its Respective Companies. All Rights Reserved.
Toronto, Canada • www.dsc.com • Printed in Canada

The trademarks, logos, and service marks displayed on this document are registered in the United States [or other countries]. Any misuse of the trademarks is strictly prohibited and Tyco International Ltd. will aggressively enforce its intellectual property rights to the fullest extent of the law, including pursuit of criminal prosecution wherever necessary. All trademarks not owned by Tyco International Ltd. are the property of their respective owners, and are used with permission or allowed under applicable laws.

Product offerings and specifications are subject to change without notice. Actual products may vary from photos. Not all products include all features. Availability varies by region; contact your sales representative.



29008282R003